

2019 KS2 School Dashboard

for governors & school leaders

Produce custom dashboards
at fftaspire.org

Pierrepoint Gamston Primary School

LA Nottinghamshire DFE 8912946 Produced September 2019 Version 1

What it is

Seven easy-to-use reports that help governors and school leaders to evaluate school performance using the latest 2019 DFE school performance indicators.

What it tells you

- What are the strengths and areas for improvement in your school?
- How does attainment and pupil progress compare to the national average over the last three years?
- How are you performing in different subjects?
- Do you have any under-performing groups of pupils?
- How might the context of your school affect performance?
- How does pupil attendance compare to the national average?

About the data shown

1 2 3

Actual results

Actual results for your school, using a range of measures such as averages and thresholds.



Gauges

These display headline indicators and whether actual results and pupils' progress are in line with, or significantly above or below, the national average.

ESTIMATED



1 2 3

Pupil progress

The value added progress that your pupils have made from one key stage to the next. FFT compares your actual results to the estimated results based on the progress of similar pupils nationally.



Statistical significance

Green plus signs and red minus signs highlight where either actual results or pupils' progress is significantly above or below the national average.



Trends

The dashboard analyses school performance over 3-5 years. Any significant year-on-year improvement is highlighted using an up arrow. Significant declines in performance are highlighted with a down arrow.



Strengths & weaknesses

These highlight key pupil groups and subjects where progress is above or below the national average.

Working in partnership with



Data sources

Generated from FFT Aspire which includes data sourced from the DfE (National Pupil Database) and data calculated by FFT. FFT is accredited as a DfE supplier to receive early access to ASP data. Headline performance indicators will be consistent with the DfE School Performance Tables and ASP.

Overview

KS2 Attainment 2019 · Actual results

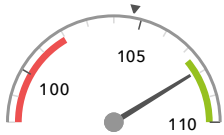
30 pupils

Average Scaled Score (Re, Ma)

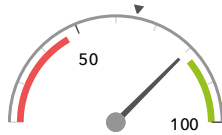
% Expected standard+ (Re, Wr, Ma)

107.9 +

80%



Significantly above the national average (104.7) ◀



In line with the national average (65%) ◀

KS2 Progress 2019 · Value Added

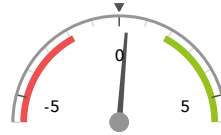
30 matched pupils

Average Scaled Score (Re, Ma)

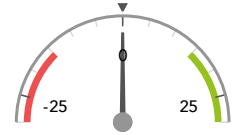
% Expected standard+ (Re, Wr, Ma)

+0.3

-0%



In line with the national average (0) ◀



In line with the national average (0%) ◀

KS2 higher and lower performing pupil groups 2019

	Higher performing	Lower performing
Overall achievement pupil progress	Not FSM (27) Summer Term (5) Not FSM (ever) (26)	Higher attainers (19) Male (14) First language English (29)
KS2 reading achievement pupil progress	Spring Term (11) Not FSM (27) Female (16)	Male (14) Summer Term (5) Higher attainers (19)
KS2 writing achievement pupil progress	Spring Term (11) Female (16) Summer Term (5)	
KS2 mathematics achievement pupil progress	Summer Term (5) Autumn Term (14) Not FSM (27)	Spring Term (11) Higher attainers (19)
KS2 grammar, punctuation & spelling achievement pupil progress	Summer Term (5) Spring Term (11)	Autumn Term (14) Middle attainers (10) Female (16)

Attainment & progress

KS2 Attainment 2019

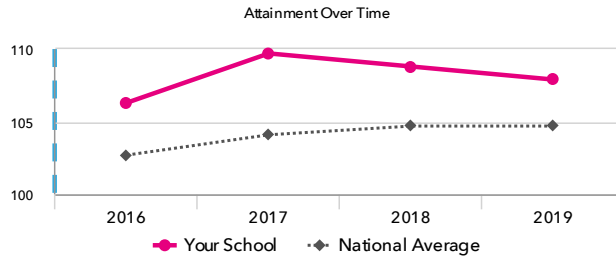
30 pupils

Average Scaled Score (Re, Ma)

107.9 +



Significantly above the national average (104.7)



KS2 Progress 2019

30 matched pupils

Average Scaled Score (Re, Ma)

+0.3



In line with the national average (0)

% Expected standard+ (Re, Wr, Ma)

-0%



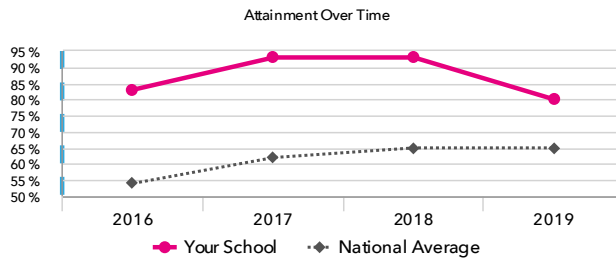
In line with the national average (0%)

% Expected standard+ (Re, Wr, Ma)

80%



In line with the national average (65%)



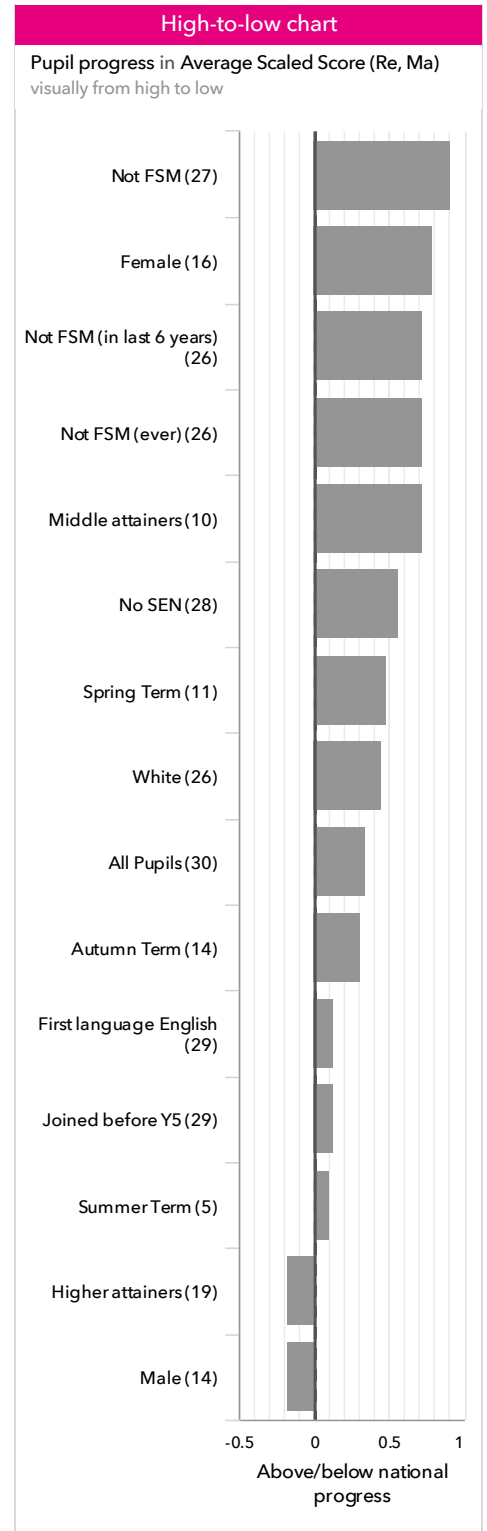
KS2 performance summary

	Actual results			Pupil progress		
	2017	2018	2019	2017	2018	2019
Number of Pupils / % Matched	30	30	30	93%	93%	100%
% Expected standard+ (Re, Wr, Ma)	93% +	93% +	80%	+9%	+4%	-0%
% Higher standard (Re, Wr, Ma)	20% +	17%	27% +	-3%	-14%	+3%
Average Scaled Score (Re, GPS, Ma)	110.1 +	109.3 +	108.2 +	+1.7	-0.6 ↓	+0.1
Average Scaled Score (Re, Ma)	109.7 + ↑	108.8 +	107.9 +	+1.6	-0.6 ↓	+0.3
% Expected standard+ Reading	97% +	97% +	87%	+6%	+4%	+1%
% Higher standard Reading	47% +	50% +	47% +	+3%	-7%	+3%
Scaled Score Reading	109.4 + ↑	109.3 +	107.8 +	+1.1	-0.5	+0.5
% Expected standard+ Writing	100% +	100% +	97% +	+8%	+5%	+7%
% Higher standard Writing	23%	50% + ↑	47% +	-13%	+0%	+9%
Scaled Score Writing	105.3 +	108.0 + ↑	107.3 +	-0.2	+0.7	+2.1
% Expected standard+ Maths	97% +	97% +	87%	+5%	+3%	-2%
% Higher standard Maths	50% +	30%	47% +	+8%	-21% ↓	+2%
Scaled Score Maths	110.0 +	108.3 +	107.9 +	+2.0	-0.6 ↓	+0.2
% Expected standard+ Grammar, Punctuation & Spelling	100% +	100% +	87%	+7%	+6%	-2%
% Higher standard Grammar, Punctuation & Spelling	50% +	60% +	47%	-2%	-6%	-8%
Scaled Score Grammar, Punctuation & Spelling	111.3 +	111.2 +	109.0	+1.4	-0.7	-0.4
% Expected standard+ Science	100% +	100% +	93%	-	-	-

Pupil groups

KS2 Pupil groups performance 2019

	Pupils	Actual results			Pupil progress			
		Average Scaled Score (Re, Ma)	% Expected standard+ (Re, Wr, Ma)	% Higher standard (Re, Wr, Ma)	Average Scaled Score (Re, Ma)	% Expected standard+ (Re, Wr, Ma)	% Higher standard (Re, Wr, Ma)	
Summary	All Pupils	30	107.9 +	80%	27% +	+0.3	-0%	+3%
Gender	Male	14	107.3	79%	36% +	-0.2	+2%	+12%
	Female	16	108.4	81%	19%	+0.8	-2%	-4%
DFE Prior Attainment	Higher attainers	19	110.8	95%	42%	-0.2	-2%	+6%
	Middle attainers	10	103.2	60%	0%	+0.7	+5%	-1%
	Lower attainers	1	100.5	0%	0%	+6.4	-18%	-0%
Pupil Premium	FSM (in last 6 years)	4	98.8	25%	0%	-2.1	-13%	-4%
	Not FSM (in last 6 years)	26	109.3 +	88%	31% +	+0.7	+2%	+5%
FSM	FSM	3	97.5	33%	0%	-4.8	-12%	-5%
	Not FSM	27	109.0 +	85%	30% +	+0.9	+1%	+4%
FSM Ever	FSM (ever)	4	98.8	25%	0%	-2.1	-13%	-4%
	Not FSM (ever)	26	109.3 +	88%	31% +	+0.7	+2%	+5%
Term of Birth	Autumn Term	14	106.3	79%	29%	+0.3	+7%	+13%
	Spring Term	11	109.5 +	82%	18%	+0.5	-9%	-6%
	Summer Term	5	108.7	80%	40% +	+0.1	-3%	-3%
SEN Group	SEN Support	2	100.8	50%	0%	-2.8	-4%	-7%
	No SEN	28	108.4	82%	29% +	+0.6	+0%	+4%
EAL	First language not English	1	100.5	0%	0%	+6.4	-18%	-0%
	First language English	29	108.1 +	83%	28% +	+0.1	+1%	+4%
Mobility	Joined in Y5 or Y6	1	100.5	0%	0%	+6.4	-18%	-0%
	Joined before Y5	29	108.1 +	83%	28% +	+0.1	+1%	+4%
Ethnicity	White	26	108.8 +	85% +	27% +	+0.5	+0%	+2%
	Black African	2	106.5	50%	50%	+3.3	-8%	+30%
	Indian	1	91.0	0%	0%	-8.8	-27%	-0%
	Other Asian	1	105.0	100%	0%	+0.6	+39%	-1%



Subjects

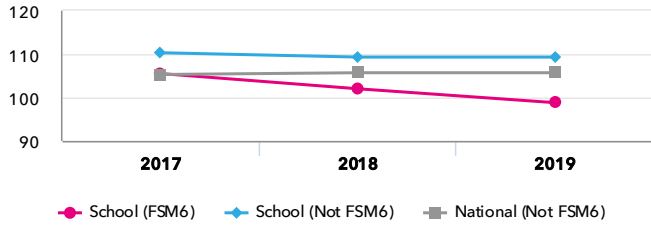
KS2 subject performance 2019

	Actual results			Pupil progress			Actual results over time		
	2017	2018	2019	2017	2018	2019			
Number of Pupils / % Matched	30	30	30	93%	93%	100%			
Reading									
% Expected standard+	97% +	97% +	87%	+6%	+4%	+1%			
% Higher standard	47% +	50% +	47% +	+3%	-7%	+3%			
Scaled Score	109 + ↑	109 +	108 +	+1.1	-0.5	+0.5			
Writing									
% Expected standard+	100% +	100% +	97% +	+8%	+5%	+7%			
% Higher standard	23%	50% + ↑	47% +	-13%	+0%	+9%			
Scaled Score	105 +	108 + ↑	107 +	-0.2	+0.7	+2.1			
Maths									
% Expected standard+	97% +	97% +	87%	+5%	+3%	-2%			
% Higher standard	50% +	30%	47% +	+8%	-21% - ↓	+2%			
Scaled Score	110 +	108 +	108 +	+2.0	-0.6 ↓	+0.2			
Grammar, Punctuation & Spelling									
% Expected standard+	100% +	100% +	87%	+7%	+6%	-2%			
% Higher standard	50% +	60% +	47%	-2%	-6%	-8%			
Scaled Score	111 +	111 +	109	+1.4	-0.7	-0.4			
Science									
% Expected standard+	100% +	100% +	93%	-	-	-			

Disadvantaged pupils

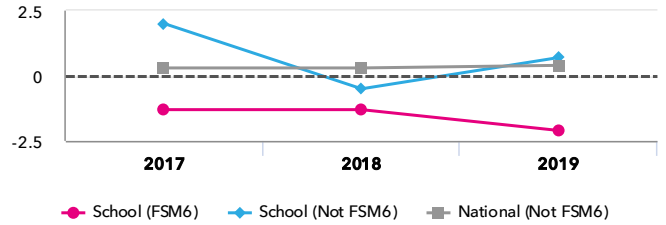
KS2 attainment for disadvantaged pupils 2019

Average Scaled Score (Re, Ma)



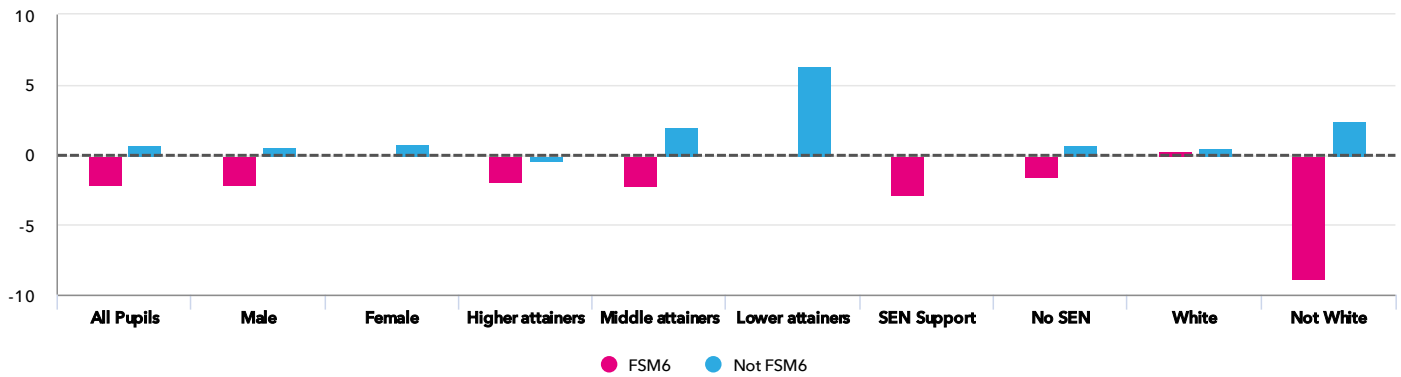
KS2 progress for disadvantaged pupils 2019

Average Scaled Score (Re, Ma)



Progress gap

Average Scaled Score (Re, Ma)



Attainment & progress

Pupils	Attainment			Progress					
	Average Scaled Score (Re, Ma)			Average Scaled Score (Re, Ma)					
	FSM6	Not FSM6	Gap	FSM6	Not FSM6	Gap			
Summary	All Pupils	4	26	98.8	109.3 +	-10.5	-2.1	0.7	-2.8
Gender	Male	4	10	98.8	110.7	-11.9	-2.1	0.6	-2.7
	Female	-	16	-	108.4	-	-	0.8	-
DFE Prior Attainment	Higher attainers	1	18	108.5	110.9	-2.4	-1.9	-0.1	-1.8
	Middle attainers	3	7	95.5	106.4	-10.9	-2.2	2	-4.2
	Lower attainers	-	1	-	100.5	-	-	6.4	-
SEN Group	SEN Support	2	-	100.8	-	-	-2.8	-	-
	No SEN	2	26	96.8	109.3	-12.5	-1.5	0.7	-2.2
Ethnic Group	White	3	23	101.3	109.7	-8.4	0.1	0.5	-0.4
	Not White	1	3	91	106	-15	-8.8	2.4	-11.2

Scatterplot

KS2 Pupil scatterplot 2019 30 pupils highlighted by Pupil Premium



Context

Context · Year 6

		Pupils	Comparative profile 2018 / 2019		Absence during Key Stage 2		Persistent absence during Key Stage 2	
		School	School	National	School	National	School	National
Summary	All Pupils	30	100%	100%	-	-	-	-
Gender	Male	14	47%	51%	-	-	-	-
	Female	16	53%	49%	-	-	-	-
DFE Prior Attainment	Higher attainers	19	63%	32%	-	-	-	-
	Middle attainers	10	33%	54%	-	-	-	-
	Lower attainers	1	3%	8%	-	-	-	-
Pupil Premium	FSM (in last 6 years)	4	13%	30%	-	-	-	-
	Not FSM (in last 6 years)	26	87%	70%	-	-	-	-
FSM	FSM	3	10%	16%	-	-	-	-
	Not FSM	27	90%	84%	-	-	-	-
FSM Ever	FSM (ever)	4	13%	30%	-	-	-	-
	Not FSM (ever)	26	87%	70%	-	-	-	-
Term of Birth	Autumn Term	14	47%	33%	-	-	-	-
	Spring Term	11	37%	33%	-	-	-	-
	Summer Term	5	17%	34%	-	-	-	-
SEN Group	SEN Support	2	7%	15%	-	-	-	-
	No SEN	28	93%	82%	-	-	-	-
EAL	First language not English	1	3%	21%	-	-	-	-
	First language English	29	97%	79%	-	-	-	-
Mobility	Joined in Y5 or Y6	1	3%	7%	-	-	-	-
	Joined before Y5	29	97%	93%	-	-	-	-
Ethnicity	White	26	87%	74%	-	-	-	-
	Black African	2	7%	6%	-	-	-	-
	Indian	1	3%	3%	-	-	-	-
	Other Asian	1	3%	3%	-	-	-	-